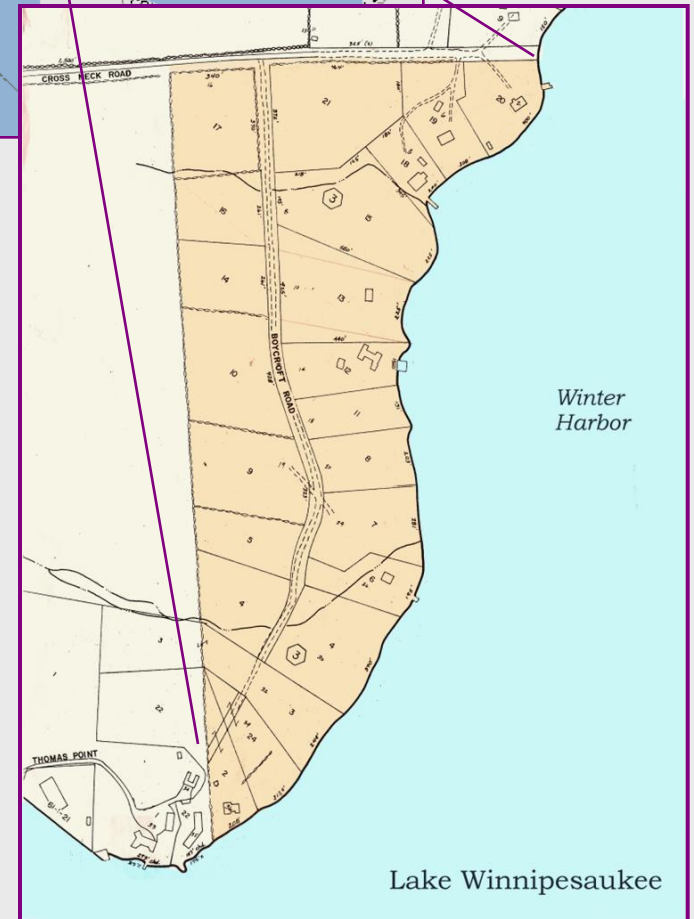
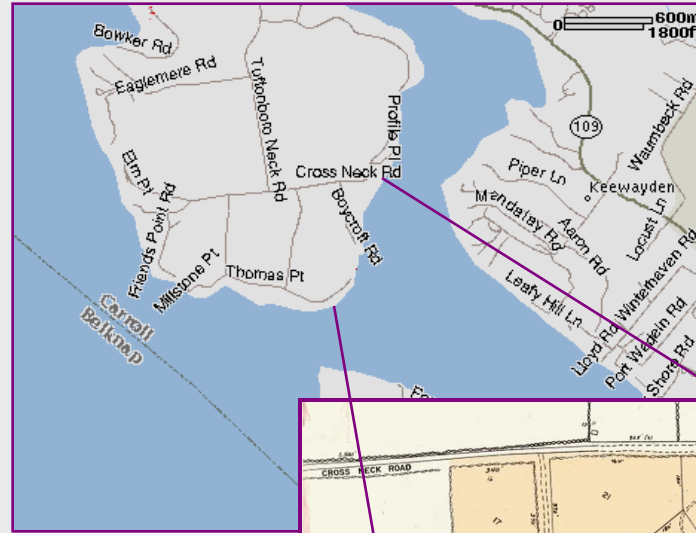


Camp Boycroft

On Tuftonboro Neck, NH

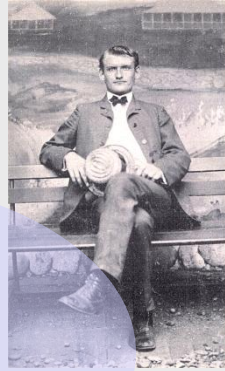


A Photographic History

Presented to the Tuftonboro Historical Society on June 23, 2004, by David and Jean Meyer Ray

Timeline

Prehistory



1900



1920

Camp Years

1940

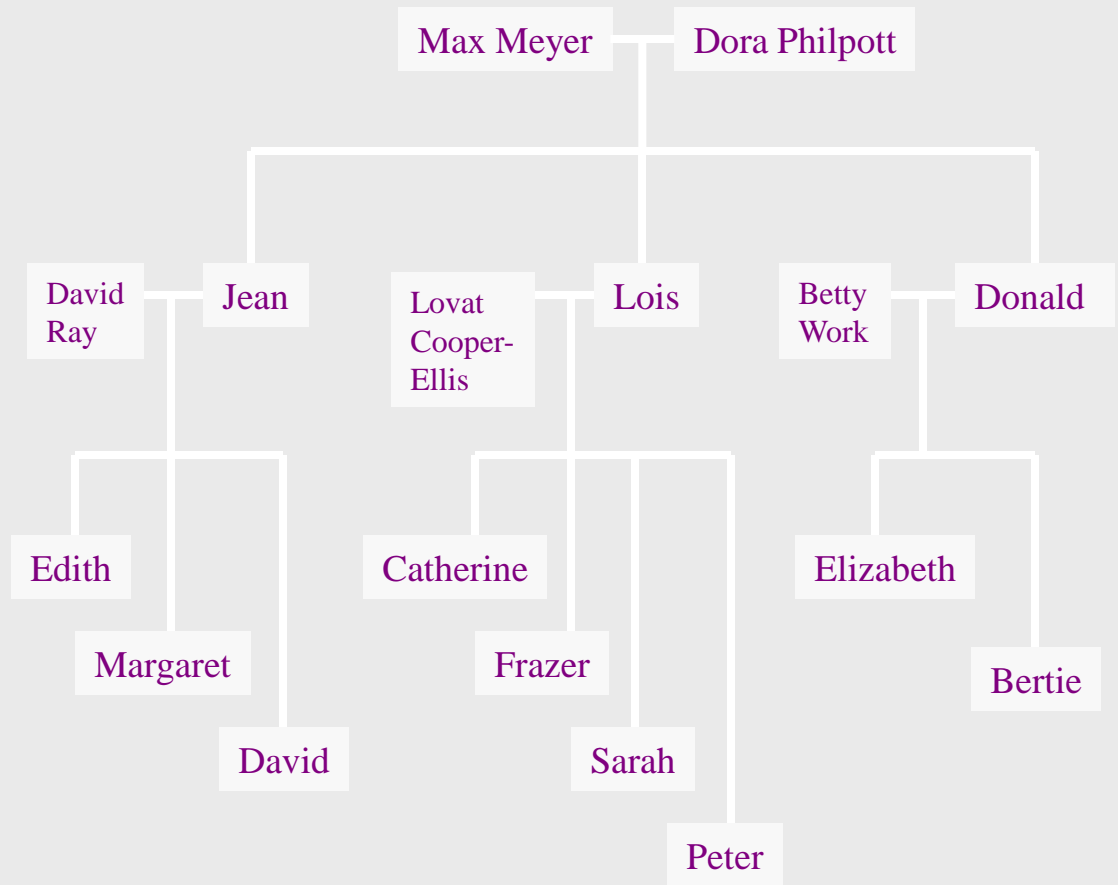
1960

Posthistory

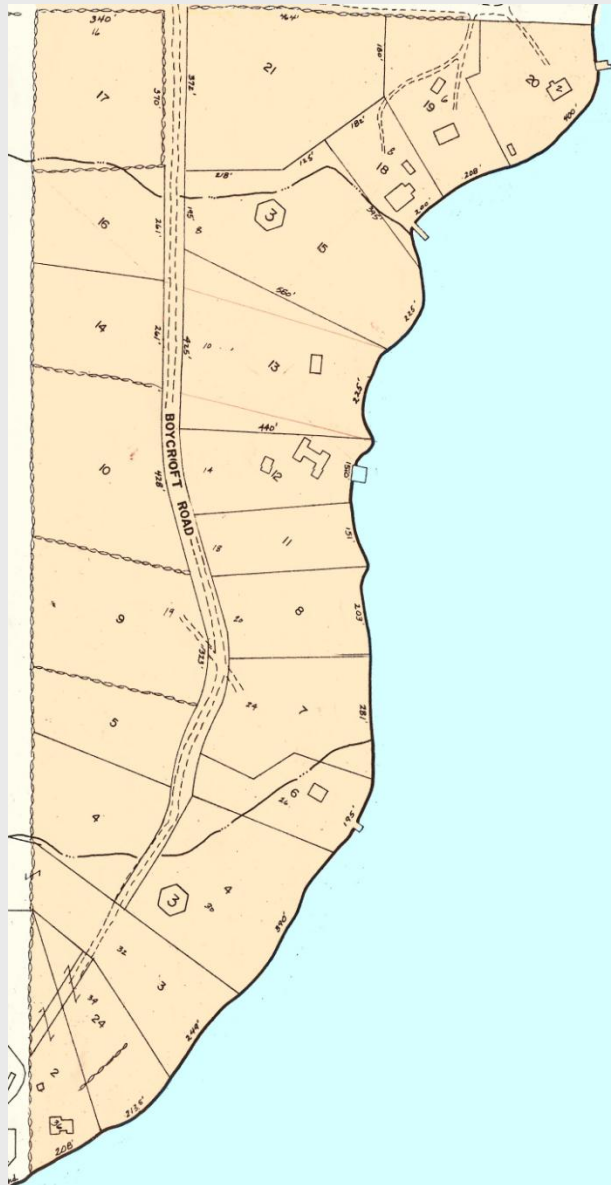


2000

Meyers



The Land



Early Years

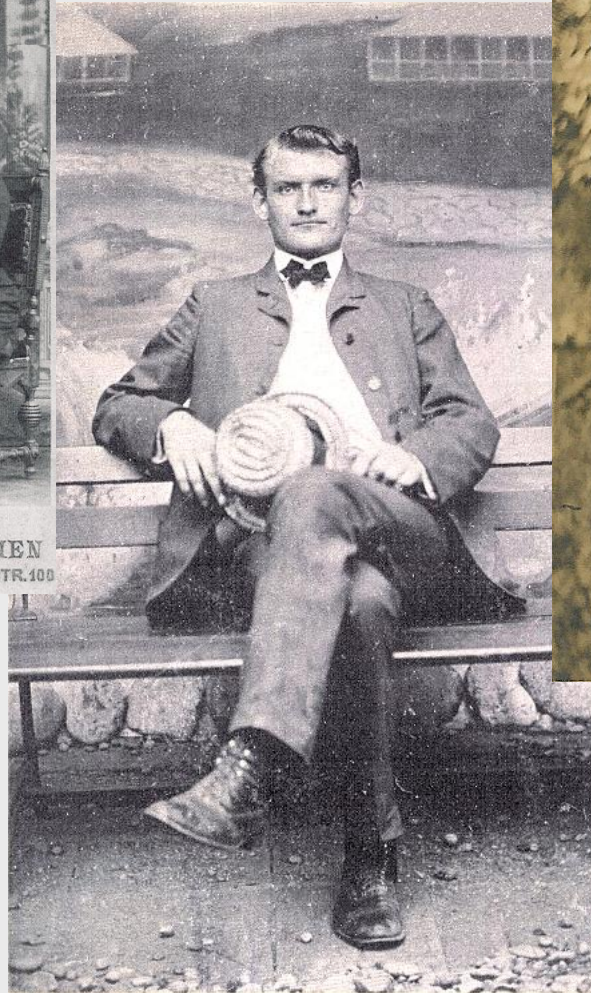


Georg Brinker
BREMEN
WESTERSTR. 100

Max Meyer

ABOVE (left) circa 1886

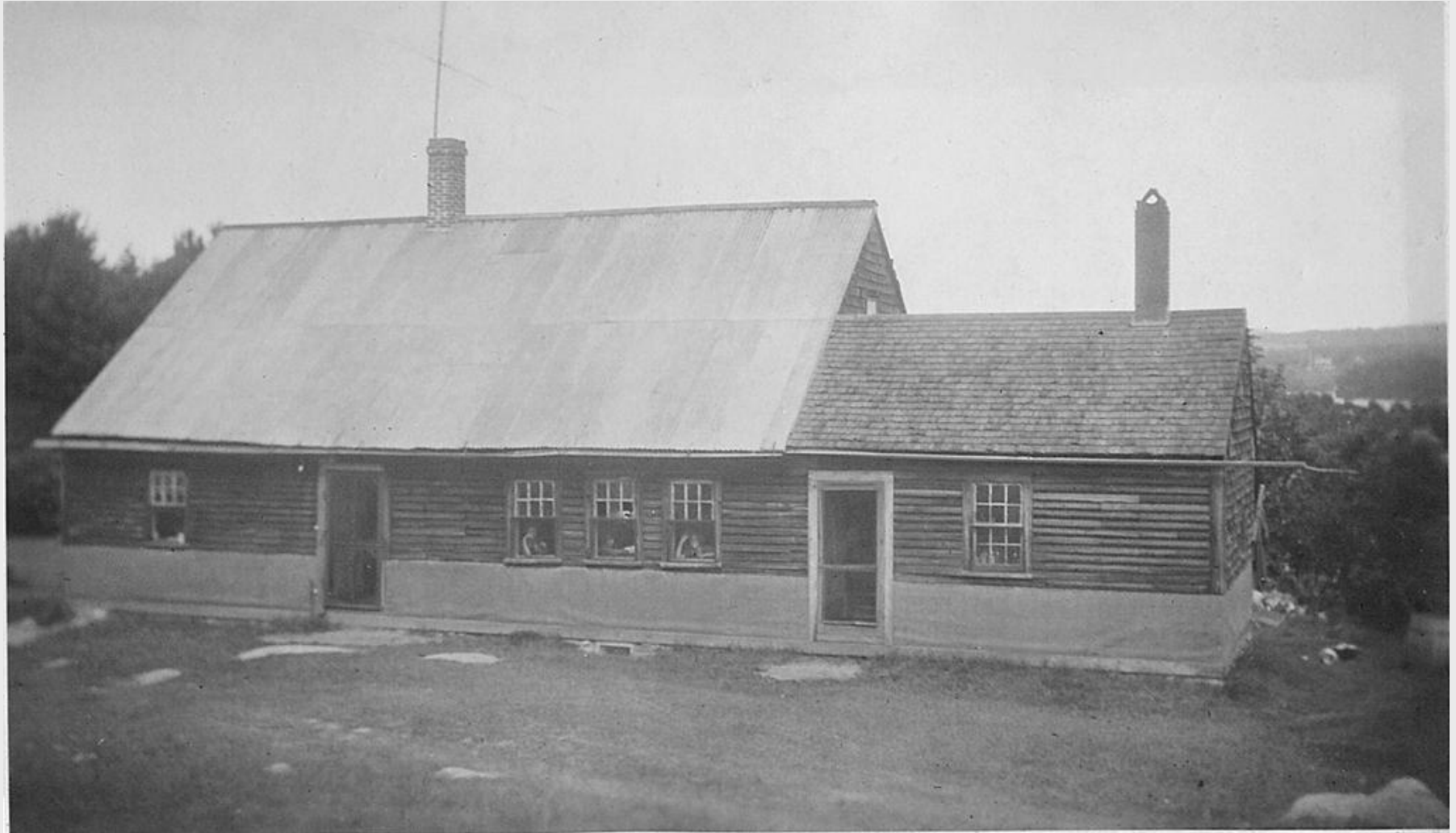
RIGHT circa 1902



Max, Dora, Jean & Lois Meyer
circa 1919

Buying the (Wiggin) Farm

Farmhouse built ~1809 – bought from Wiggin estate by Everett Ladd, who sold to Max Meyer in 1924



The View in 1924



Left to Right: Donald, Max, Lois Meyer, Marion Philpott, Jean Meyer, Ruth Philpott, Arnold Chamberlain

View of Winter Harbor in 1924

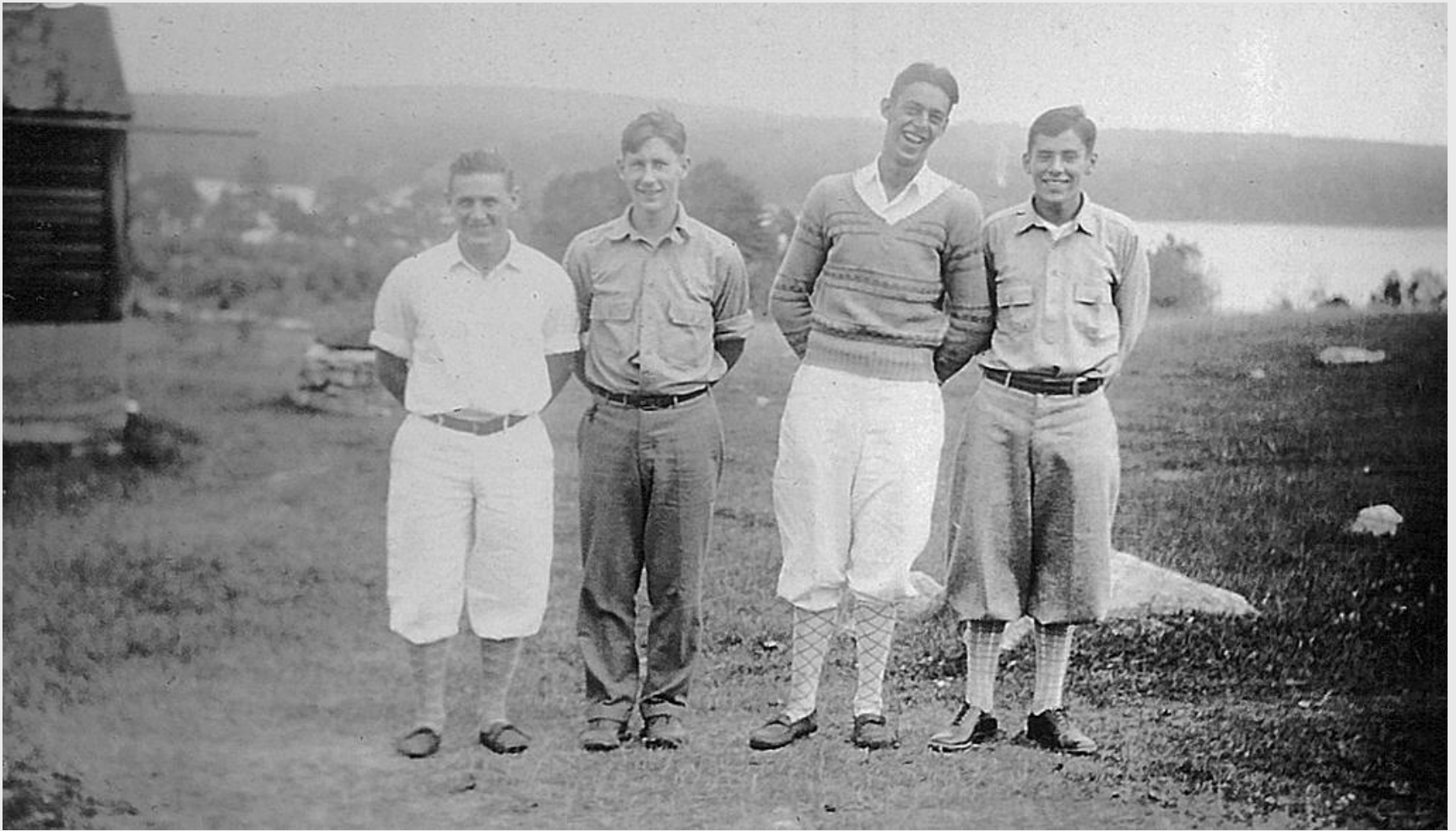


Camp Years



The Class of 1927

Counselors ('27)

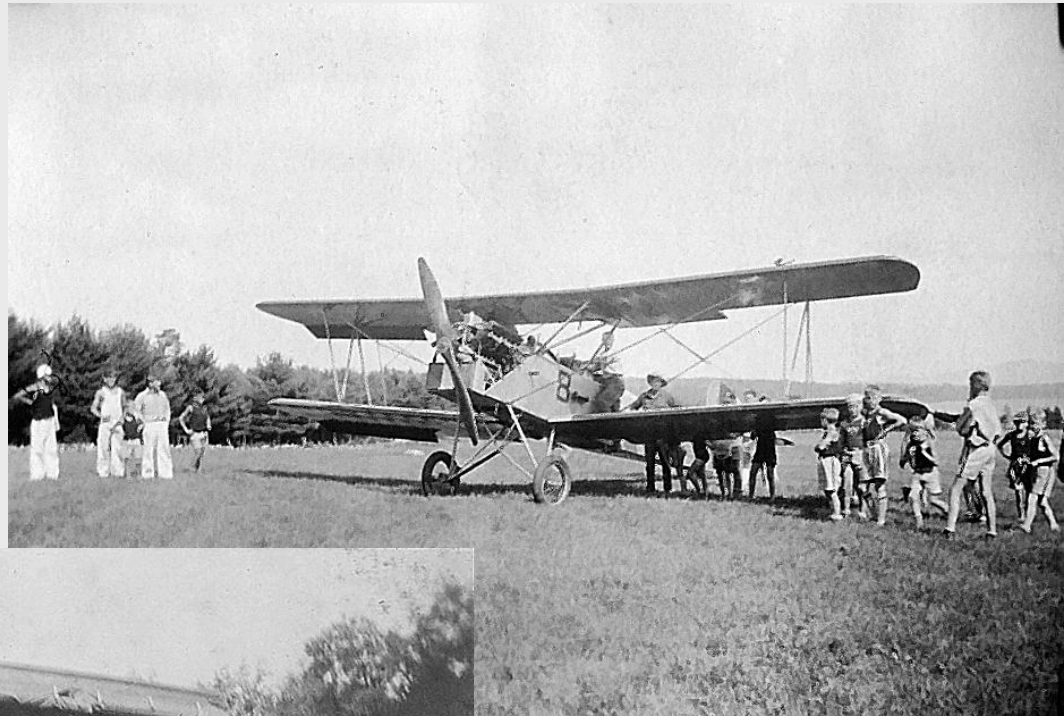


Left to Right: Ev, Bob, “Shorty”, Jim

Transportation

Below: The Boycroft Model T

Right: Great excitement as a bi-plane lands in the Boycroft field



Field Sports



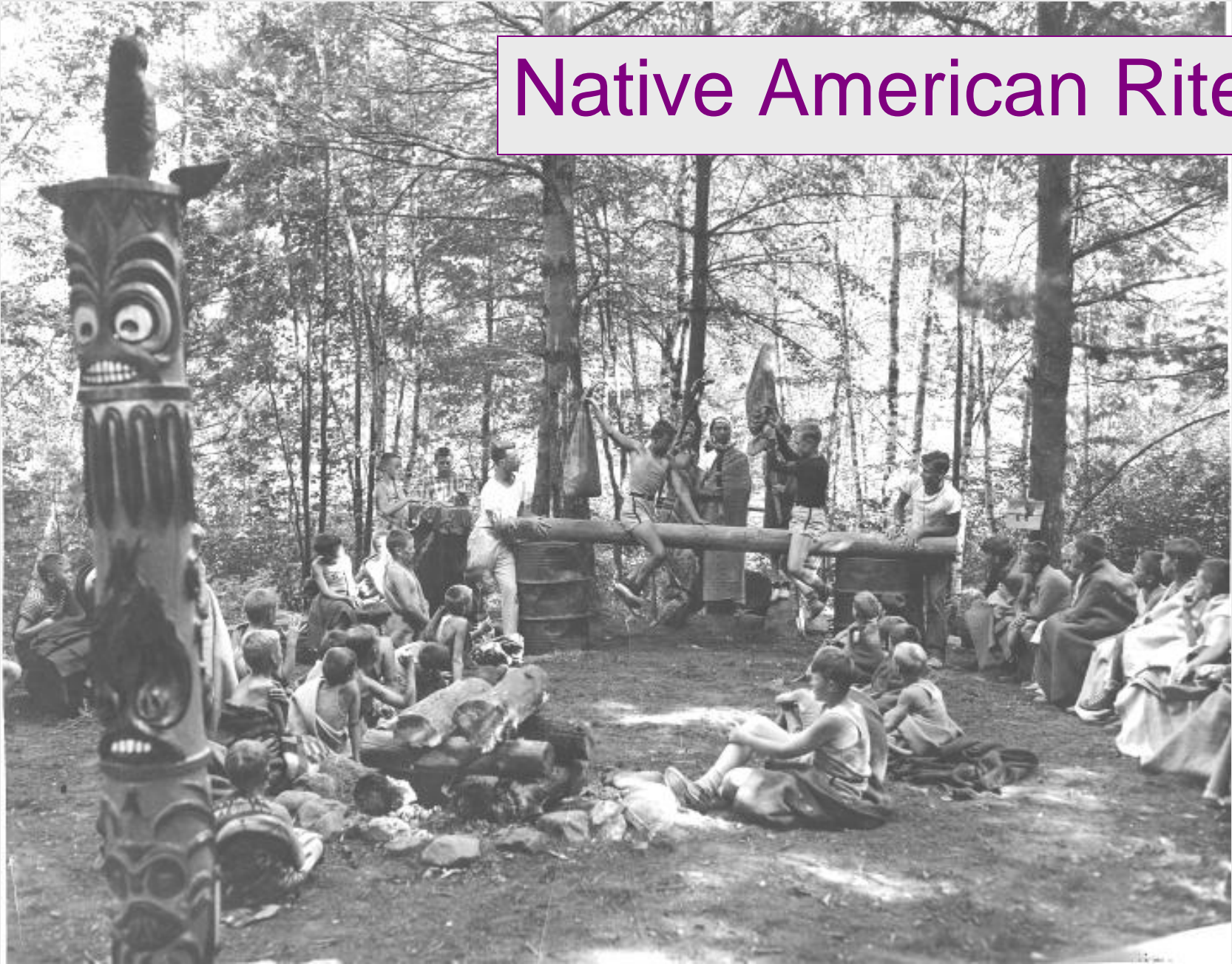
Water Sports



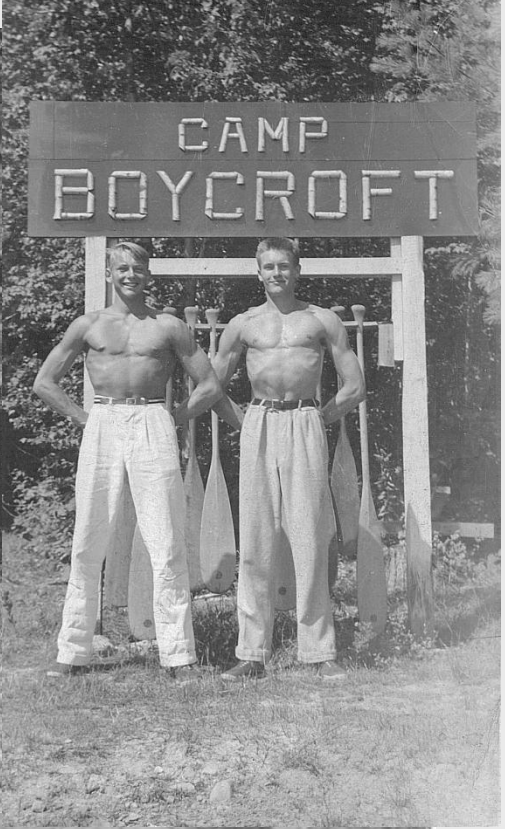
Luxury Accommodations



Native American Rites

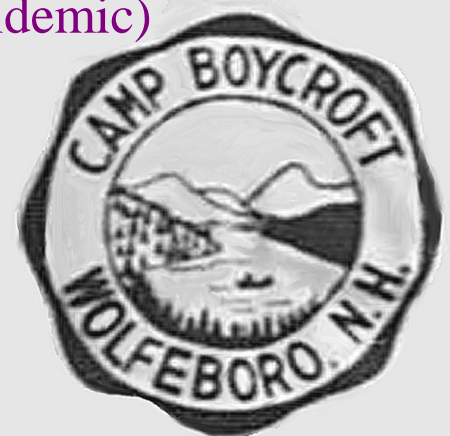


The Boy in Boycroft

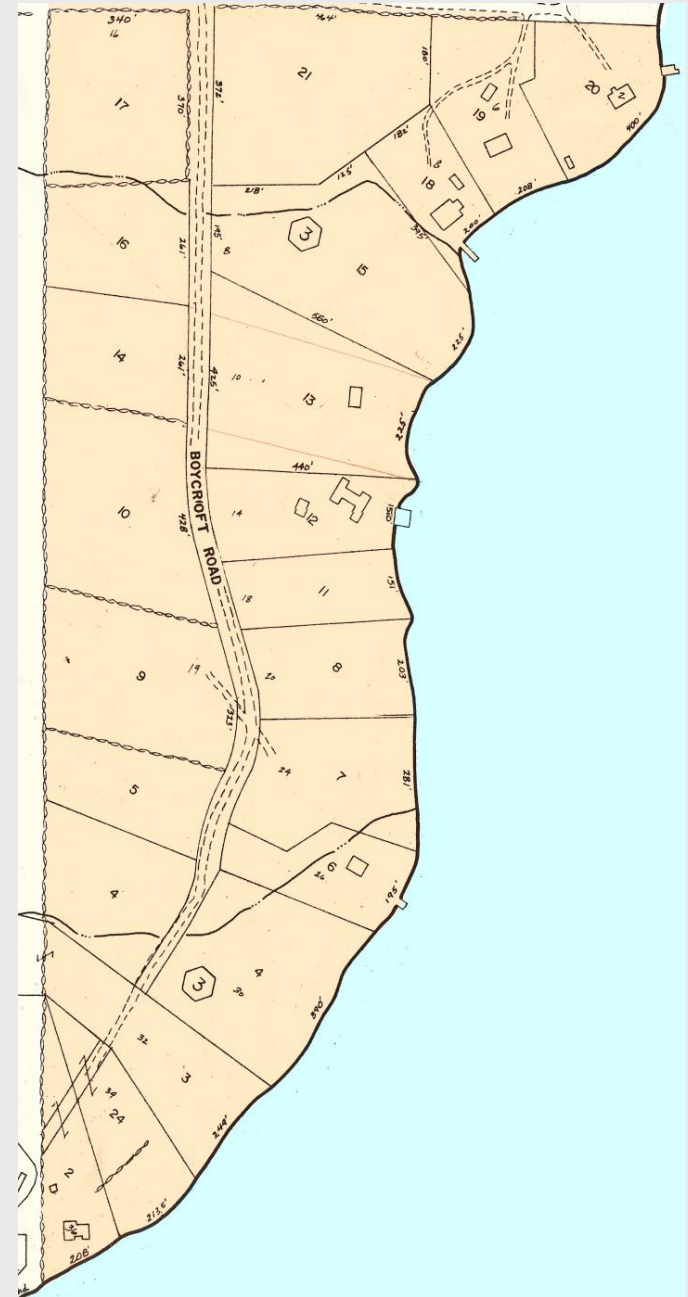


Camp Boycroft Milestones

- 1922 Founded by Everett Ladd (rented land at tip of Tuftonboro Neck)
- 1924 Wiggin farm acquired; Camp sold to Max Meyer
- 1925 Electricity installed at Farmhouse
- 1929 Outlying structures (Lodge, Craft House) built
- 1933 First drop in enrollment; Camp perseveres throughout Depression
- 1940 Start of War years; enrollment up dramatically; Farmhouse expanded
- 1949 Artesian well installed
- 1952 Max Meyer dies; Camp continues operation under Dora and Donald
- 1955 Camp enrollment declines (fears linked to polio epidemic)
- 1957 Final year of Camp operation



Boycroft Today



Farmhouse (2004)



References

- <http://demarrer.com/BoyCroft>
- <http://demarrer.com/RayCraft>